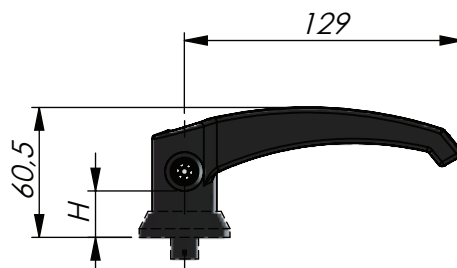
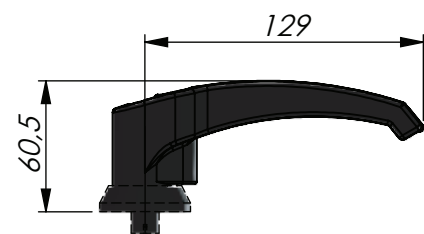
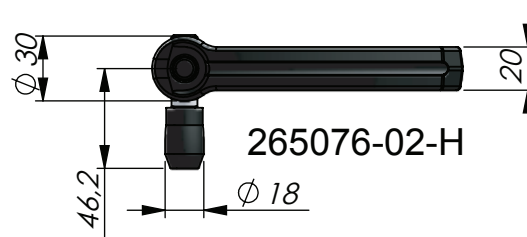


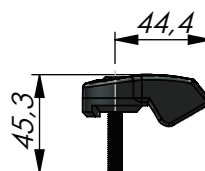
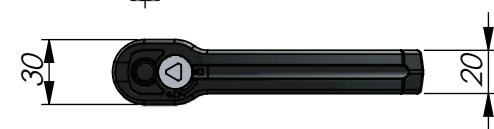
265076-10



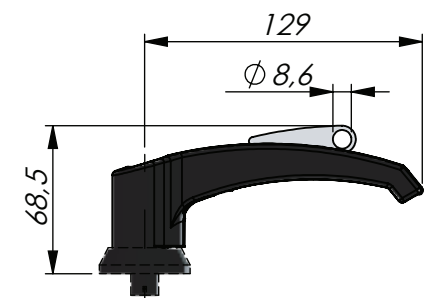
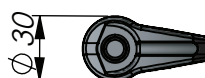
265076-02-H



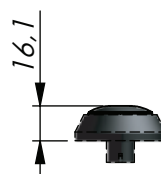
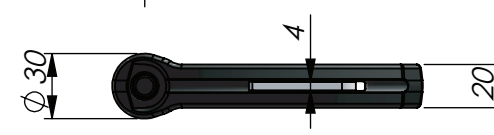
265076-3012



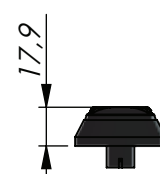
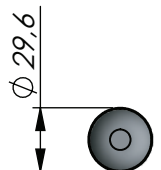
265077-00



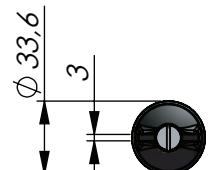
265076-60



265078-301



265076-302





HVAC handles - system Klima-flex is a latching system in locking or non-locking versions, for HVAC applications. The Klima-flex system is designed for quick and easy mounting of the handles on site. Handles for both inswing or outswing doors. Handles for inswing doors are supplied with customized roller cam. Locking versions use key extraction: Open/closed.

To build a complete unit:  
 Latching units: Page 2-311a/b.  
 Standard cams: page 2-481 and 2-491.  
 Roller cams: Page 2-312a/b.  
 Rod links and rods: Page 2-313a/b.  
 Safety handles: Page 2-312b.  
 Safety latches: Page 2-314.  
 Keys: Page 2-370 and 2-372.

**Material:**

- Handle and roller: Glass fibre reinforced polyamide (PA6GF30), black.
- Insert: Zinc die-cast, black texture powder coated.
- Cylinder: Zinc die-cast, stainless steel (304) cap and dust shutter.
- Padlock loop and cam shaft: Steel, zinc plated.

**Notes, Tests:**

1 = Customized cams (marked<sup>1</sup>).  
 Please provide us with the H-measurement.  
 \*\* = Supplied with two keys.

## HVAC Handles - System KLIMA-FLEX

P/N	Description	Door	Outside roller cam included
265076-00	Non-locking	Outswing	-
265076-02-H <sup>1</sup>	Non-locking	Inswing	Yes
265076-IL10-7-H <sup>1</sup>	Keyed alike IL101 **	Inswing	Yes
265076-IL10	Keyed alike IL101 **	Outswing	-
265076-10	Keyed alike IL0333 **	Outswing	-
265076-12-H <sup>1</sup>	Keyed alike IL0333 **	Inswing	Yes
265076-20	Keyed to differ ** (master key system on request)	Outswing	-
265076-22-H <sup>1</sup>	Keyed to differ ** (master key system on request)	Inswing	Yes
265076-62-H <sup>1</sup>	Padlockable	Inswing	Yes
265076-60	Padlockable	Outswing	-
265076-3009	Insert Square 8	Outswing	-
265076-3209-H <sup>1</sup>	Insert Square 8	Inswing	Yes
265076-3012	Insert Triangle 7	Outswing	-
265076-3212-H <sup>1</sup>	Insert Triangle 7	Inswing	Yes
265076-3023	Insert Recessed hexagon 8 (5/16 inch)	Outswing	-
265076-3223-H <sup>1</sup>	Insert Recessed hexagon 8 (5/16 inch)	Inswing	Yes
265077-00	Knob	Outswing	-
265078-301	Cover plug for latching units	-	-
265078-302	Slotted cover plug for latching units	-	-

